

Waldo

M2MD-ET-0001



Temperature/Humidity & Barometric Pressure Sensor

Light sensor

Long battery life

LED status indicator

Device status

Multiple location sensing technologies

Designed and manufactured in the USA

Improves Insights

Asset tracking provides better asset utilization

Accurate and real-time sensor data drives better management and decision-making

Increases Profits

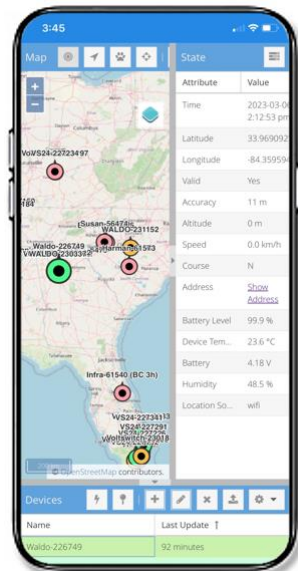
Accurate asset management drives efficiencies & cost savings

Increases asset lifespan & labor productivity

Identifies ghost assets and prevents loss

Drives new revenue generating opportunities through analytics

Features



Intelligent Device

GPS, cell tower triangulation & Wi-Fi location

High performance edge sensor alerting

Periodic or movement-based location reports.

Optional 'on-demand location'

World-class SaaS platform

High availability SaaS platforms in multiple AWS availability zones

Simple & secure APIs for customer integrations

Energy Efficiency

Extreme battery life through proprietary selective location determination algorithm

Patented next generation wireless IoT connection, power management and security technology

Cutting edge

Wireless CAT M1 modem/processor

High performance GPS & cellular antennas

Water and dust resistant

Designed, developed and manufactured in the USA



Location Connectivity

- GPS fast location
- Wi-Fi location assistance
- Wi-Fi geofencing
- Cell tower triangulation

Sensors

- Accelerometer – high performance 3-axis for movement detection
- Temperature & Humidity – 4th generation, high-accuracy (optional)
- Barometric pressure – for automatic airplane mode (optional)
- Light – IR and Visible Light – open package detection (optional)

Hardware

- Nordic Semiconductor NRF9160 wireless CAT M1 modem/processor
- High performance GPS & cellular antennas
- Multiple installation options – including screws, rivets, cable ties and/or internal magnets (optional)

Batteries

- Patented technology for ultra-low power and ultra-long battery life
- Up to 10 years with once daily location updates
- Supports user-replaceable ‘off-the-shelf’ AA lithium or alkaline batteries

Software Integration

- Easy integration with virtually any front-end using AWS SQS
- Over-the-air (OTA) Software upgradeable

Additional Information

- Lowest power wireless chipset
- Size: 2.3” Width x 3.5” Length x 1.2” Height

Made in the USA

- Designed, developed and manufactured in the USA
- Part# M2MD-ET-0001/01 Base Model
- Part# M2MD-ET-0001/02 Base + Temp/Humidity
- Part# M2MD-ET-0001/03 Base + Temp/Humidity + Light + Barometric Pressure (Altitude)

	General Specifications
Cellular	LTE CAT M1 LTE : Bands 2, 4, 12
GNSS	Nordic Semiconductor NRF9160 Integrated GNSS
Casing	IP Rating: IP67 compliant, ruggedized case. Can withstand impact, fine dust and brief submersion. Includes mounting ears. Optional magnets.
BLE	BLE, Bluetooth 5
Wi-Fi Positioning	WiFi Location Assist
Dimensions	3.5" (L) × 2.3"(W) × 1.2"(H)
Weight	5.8 oz
Battery	3 AA Ultimate Lithium or 3 AA Alkaline. User replaceable.
Battery Life	1 report per day (WiFi & Cell ID): Up to 10 years 1 report per day (GPS): Up to 4 years "On Demand" location extends battery life due to usage only when needed.
Operating Temperature	Battery rated -40 to 140 °F. Range extremes will degrade battery life.